



FuelCell 5 New Features

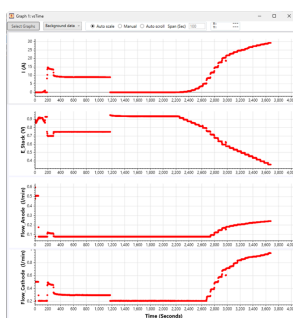
New Features

Backwards Compatibility

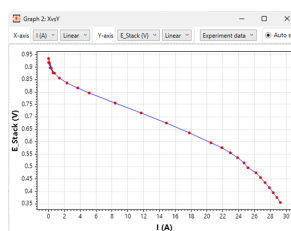
FuelCell 5 is 100% Backwards Compatible with existing FuelCell 4 instrument configuration and setup files. Installing FuelCell 5 will not remove any existing FuelCell 4 installations. Backwards compatibility to FuelCell 4 was top priority and existing users of FuelCell 4 will enjoy a familiar look and feel throughout the app.

Graphing

Graphs have been redesigned using a high performance third party graphing library. Users still have the ability to create the same graphing types. Multiple graph windows of one or both types can be created. A new feature of the vs Time graph is the ability to add multiple plots that share a common time axis. This allows for inspection of the various Y values stacked in a vertical orientation for a given time span.

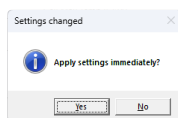


vs. Time



X vs. Y

Apply Immediate Background Settings



When running an experiment list, the background settings can be used to immediately change conditions. For example, if cell temperature is modified using Background Setup Cell, the option is shown to immediately apply the new temperature setpoint.

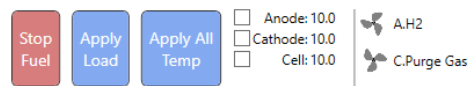
Experiment Descriptions

Experiment list descriptions have been enhanced to better detail the control and measurement settings.

Windows .NET 8

FuelCell 5 has been completely rewritten using Microsoft Windows .NET 8 in order to stay on top of mainstream application development technologies.

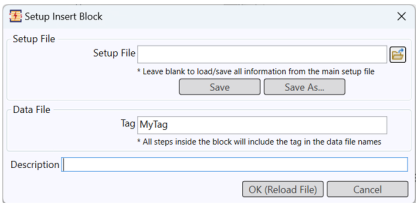
Animated Gas Flow Indicators



A set of visual helpers are displayed to give the user a visual indication of the source of the Fuel or Purge gas as well as the flow rate. The speed of the fans depend on the respective flow rates:

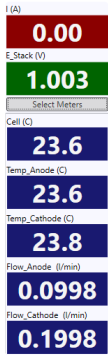
Flow rate (l/min)	Fan rotational speed
flow >= 0.1	normal
0 < flow < 0.1	slow
flow = 0	0

Insert Block Tag



Experiments placed inside an Insert Block will include the **Tag** string within the file name. For example, given the string **MyTag**, an experiment with its Data File name set to **MyData.fcd** will be saved as **MyData_MyTag.fcd**.

User Selectable Meters



More user selectable meters can now be shown on the left side, only limited by the height of the main window.

Release Notes

2025-08-22 FC5 v1.0.33 | FC5 Release Note

- Fixed FRA 880 incorrect scaling
- Transfer of FC4 settings incorrectly included disabled mixing gases
- Improved recovery after a communications failure
- Improved diagnostic logging